

## Impact of Mentoring

A study of 17 ex-offender mentor programs under the Ready4Work reentry initiative produced several positive initial findings. Participants who met with a mentor at least once:

- Remained in the program longer
- Were twice as likely to obtain a job
- Were more likely to stay employed
- Were 39% less likely to recidivate

(McClanahan, 2007, Ready4Work. www.ppv.org)



Dan and Rick, CORP mentor match

*"[My mentor] has helped me with positive feedback to keep me from giving up and letting me know that I am capable — I'm good enough to succeed."*

~ CORP mentee

***"It is really satisfying to help someone with the challenging transition from the corrections system into the larger society. It gives me an appreciation of all the steps the mentees have to accomplish in order to achieve successful reentry."***  
~ Rick, CORP mentor



Community Offender Reentry Program

SOAR Career Solutions  
205 W. 2nd St. Suite 101 Phone: 218.722.3126  
Duluth, MN 55802 Fax: 218.722.4617

E-mail: [scarlson@soarcareers.org](mailto:scarlson@soarcareers.org)

## Become a CORP Volunteer Mentor

Community Offender Reentry Program  
SOAR Career Solutions

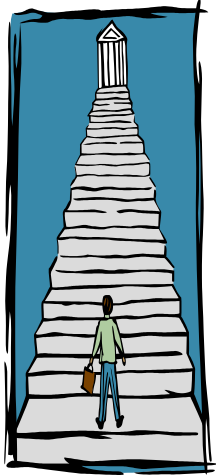


**Mission: To connect ex-offenders with positive community support.**

Tel. 218-722-3126

## Reentry In Duluth

- Every year over 800 offenders are released to the Duluth area from federal and state correctional facilities and county jails.



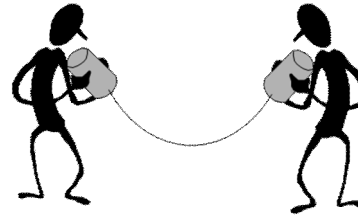
- Ex-offenders face many barriers as they attempt to find housing and employment, while dealing with addictions, mental health issues and/or other challenges.
- CORP is a voluntary reentry program which offers intensive

case management to help ex-offenders make a more successful return to their community.

- Mentoring enhances the efforts of reentry programs as they support ex-offenders and work towards reducing recidivism.

## What is a Mentor?

Someone who provides interpersonal and practical support, serves as a positive role model, and engages in a respectful and trusting relationship with an ex-offender.



## What kind of things would I do?

- Meet one on one for coffee, a meal, a walk, community activities, etc.
- Attend group meetings.
- Help with problem solving, goal setting, and dealing with every day challenges and obstacles.



*"I've never let anyone in my life before!"*  
~Ann, CORP mentee

Ann and Dana, CORP mentor match

## Requirements

- Be nonjudgmental
- At least 21 years of age
- Ability to attend training (~6 hours)
- Ability to commit at least four hours per month
- Ability to commit to the program for one year
- If chemically dependent, must be sober for at least two years
- No felonies for past five years
- Not on probation/parole
- Have own transportation or access to bus line

## What will I get out of being a mentor?

- An opportunity to make a difference in someone's life.
- An opportunity to give back to the community.
- An opportunity to expand your horizons and world view.

### Community Offender Reentry Program

SOAR Career Solutions Phone: 218.722.3126  
205 W. 2nd St. Suite 101 Fax: 218.722.4617  
Duluth, MN 55802

E-mail: [scarlson@soarcareers.org](mailto:scarlson@soarcareers.org)